




EARTH DAY

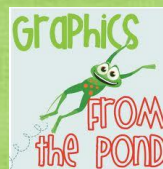


math activities

© Hannah Martin



Clip Art and Graphics thanks to:



math fun includes:

- WORD PROBLEMS
- ADDITION WITH AND WITHOUT REGROUPING
- SUBTRACTION WITH AND WITHOUT REGROUPING
- REGROUPING MAT
- LENGTH



there were 20 trees planted in the garden. our class planted 36 more. how many are there now in all?



we gave 15 pounds of paper to be recycled. 10 pounds went to the plant. how many pounds are left to be recycled?



64 caterpillars turned into butterflies. then 45 more became butterflies! how many butterflies are there all together?



we picked up 85 bags of trash outside. 40 bags fell off the truck. how many bags stayed on the truck?



we planted 16
flowers in our
garden. then we
planted 14 more.
how many flowers
are there now?



there were 27
trees giving us
shade. the sun
moved and 54
more trees gave
shade. how many
trees gave us
shade in all?



we counted 53
leaves on the tree.
the wind blew 26
off their branches.
how many leaves
are left?



there was 82 days
of spring. the sun
shone down for
only 47. how many
cloudy days were
there?



♻️ EARTH DAY FUN DAY! ♻️

ADDITION AND SUBTRACTION PLAYING
CARDS WITH AND WITHOUT
REGROUPING



Like War, pull a card and do the math on paper or a whiteboard. The first to reveal correct answer wins!

GROUP 1

14-7



10-5



16-6



19-3



18-6



13-1



18-4



19-7



9-7



GROUP 1

$7+7$



$8+9$



$12+3$



$9+7$



$6+4$



$3+3$



$9+4$



$4+10$



$10+0$



GROUP 1

$11+6$



$14+3$



$11+9$



$5+7$



$3+15$



$11-9$



$9-4$



$14-3$



$17-6$



GROUP 2

$22+60$



$47+30$



$16+50$



$57+20$



$17+30$



$48+20$



$74+10$



$39+20$



$36+40$



GROUP 2

$66-20$



$47-30$



$56-30$



$57-20$



$87-50$



$48-40$



$74-10$



$99-70$



$87-60$



GROUP 2

$12+70$



$47+40$



$60+15$



$54+10$



$39-10$



$44-40$



$56-30$



$89-20$



$36-20$



GROUP 3

$$22+69$$



$$47+33$$



$$16+56$$



$$57+24$$



$$17+38$$



$$48+25$$



$$74+19$$



$$39+28$$



$$36+47$$



GROUP 3

$$64 - 27$$



$$82 - 18$$



$$90 - 34$$



$$57 - 49$$



$$53 + 38$$



$$47 + 23$$



$$51 + 29$$



$$37 + 18$$



$$45 + 26$$



GROUP 3

98-69



72-18



76-27



81-45



53-24



41-33



87-19

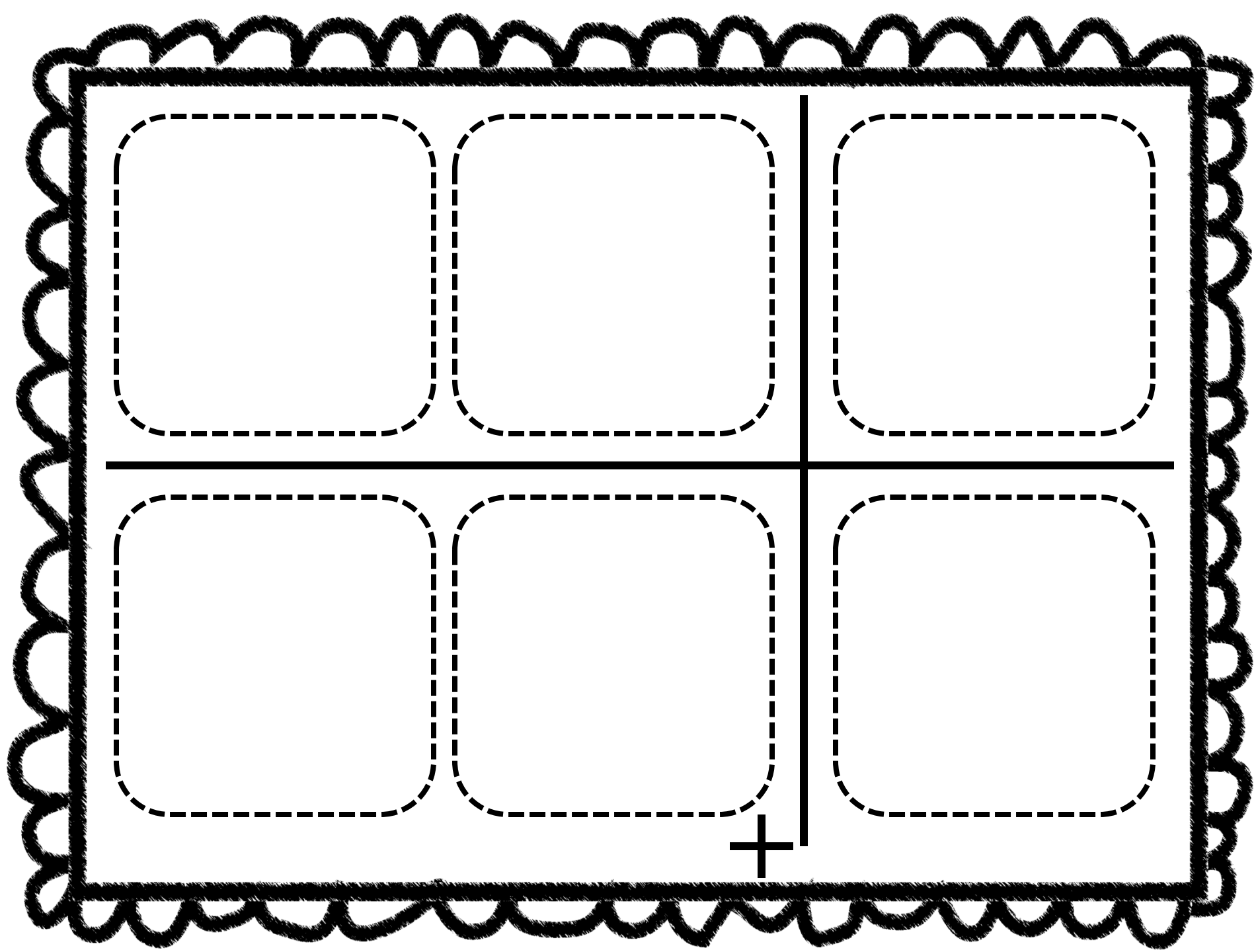


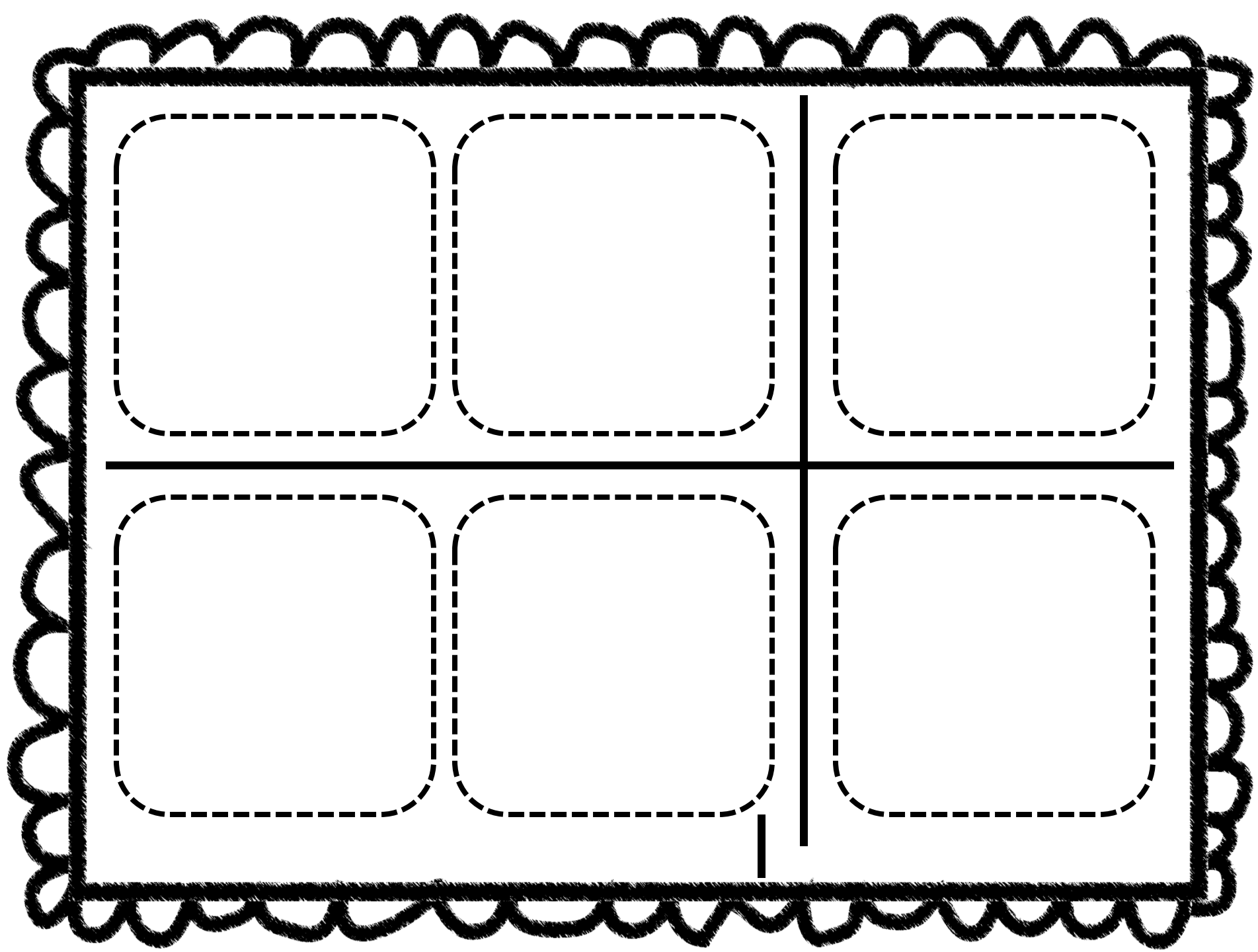
42-23



45-37







HOW LONG Will It GROW? (Measuring Length)

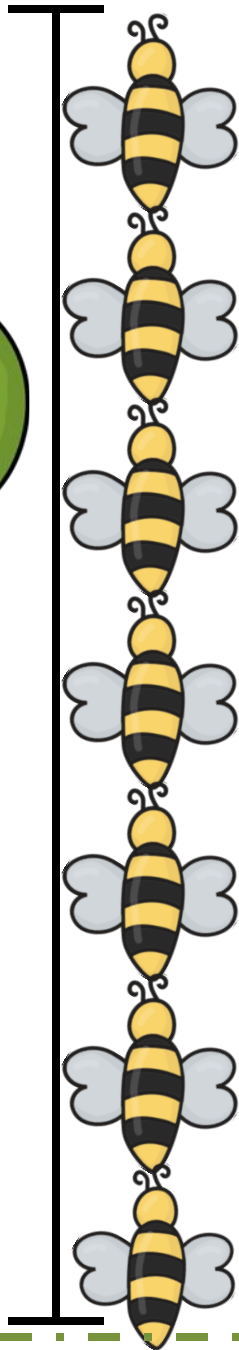
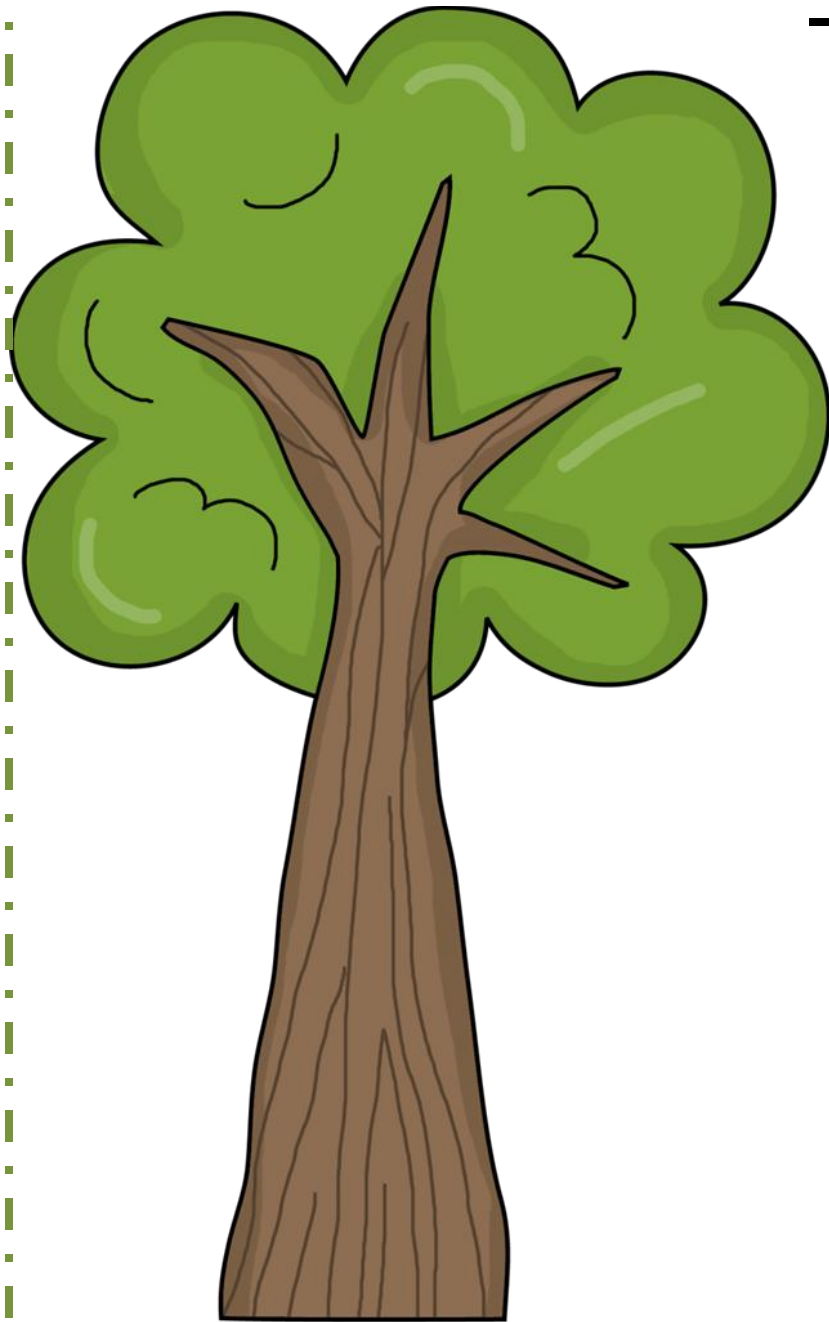


Measure the following pictures
using:

- * PAPER CLIPS
- * CRAYONS
- * ONES CUBES
- * BEES AND BUTTERFLIES

Then fill out the worksheet





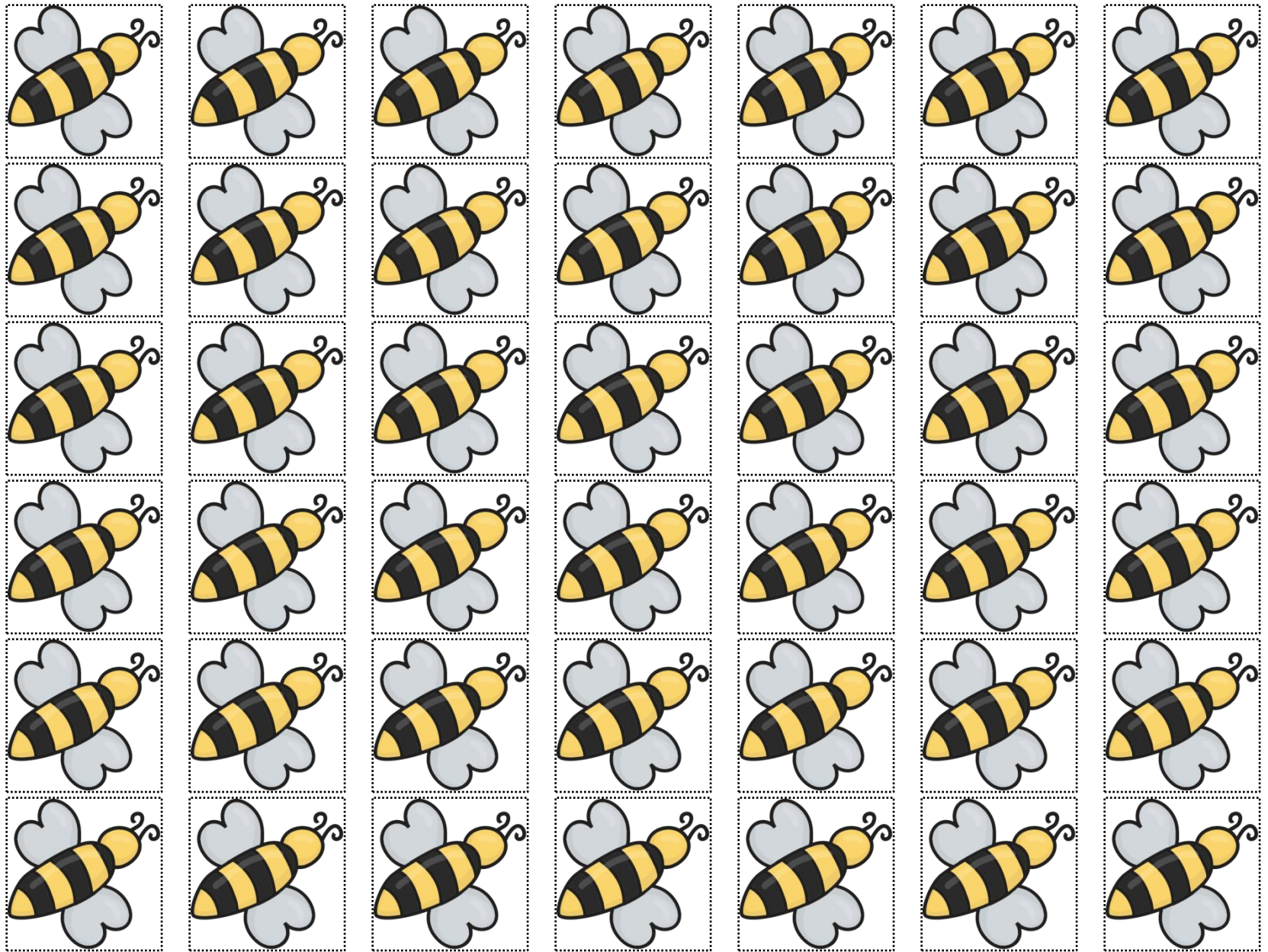
HOW TO MEASURE:

MEASURE FROM END TO END

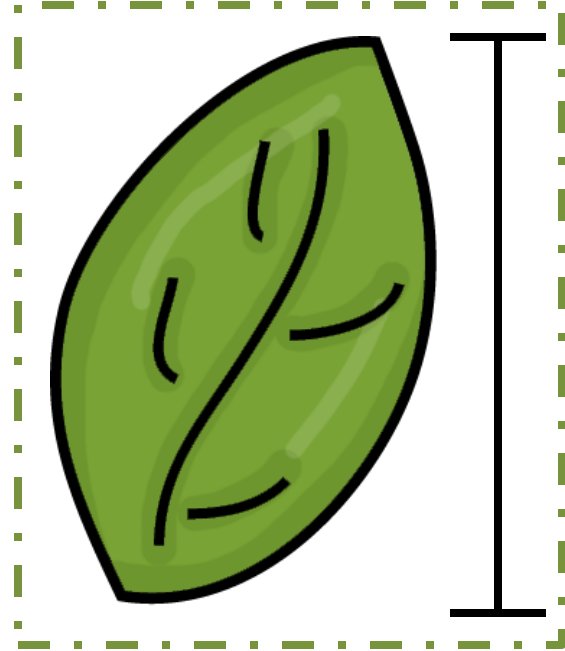
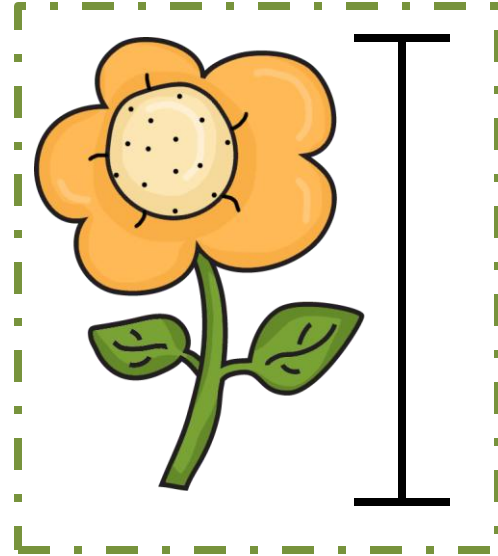
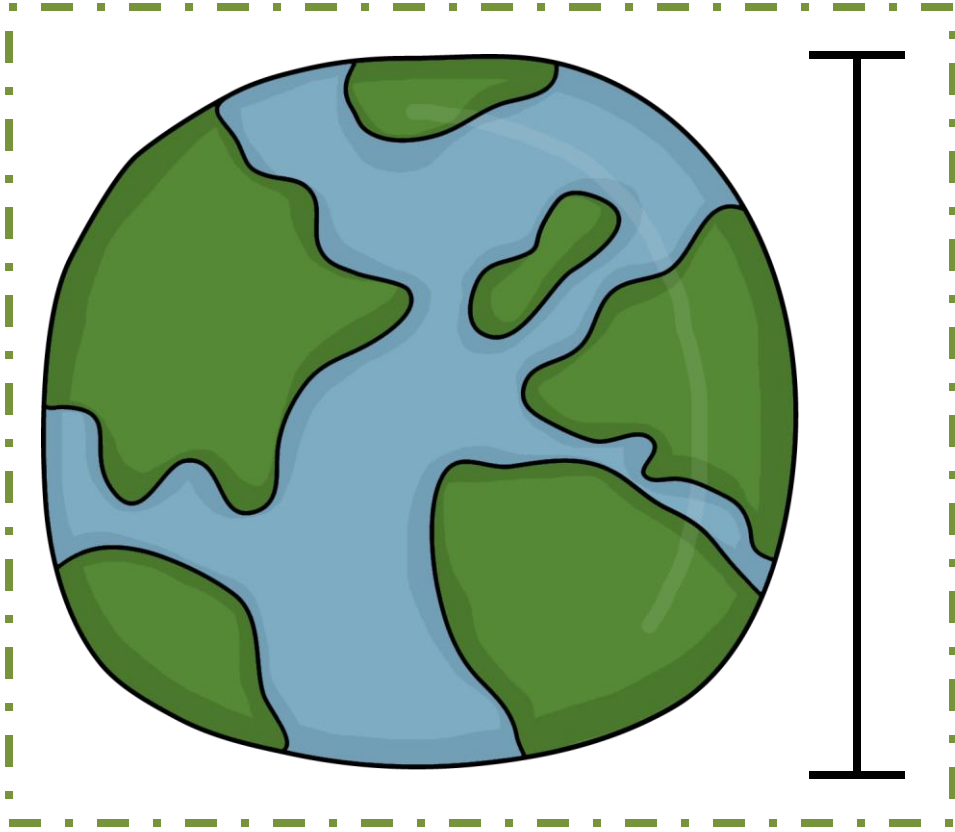
MATCH UP EACH OBJECT YOU MEASURE WITH SO THEY TOUCH, BUT DO NOT OVERLAP.

WHEN YOU CAN DO THIS, YOU CAN START TO USE A RULER! 😊

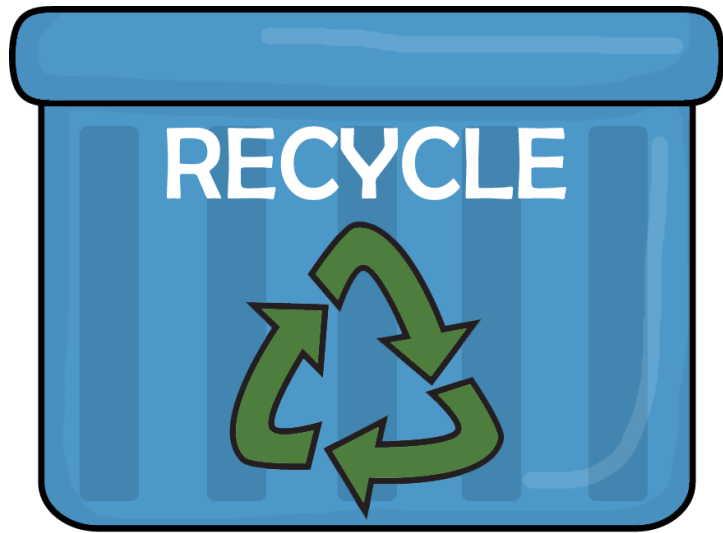
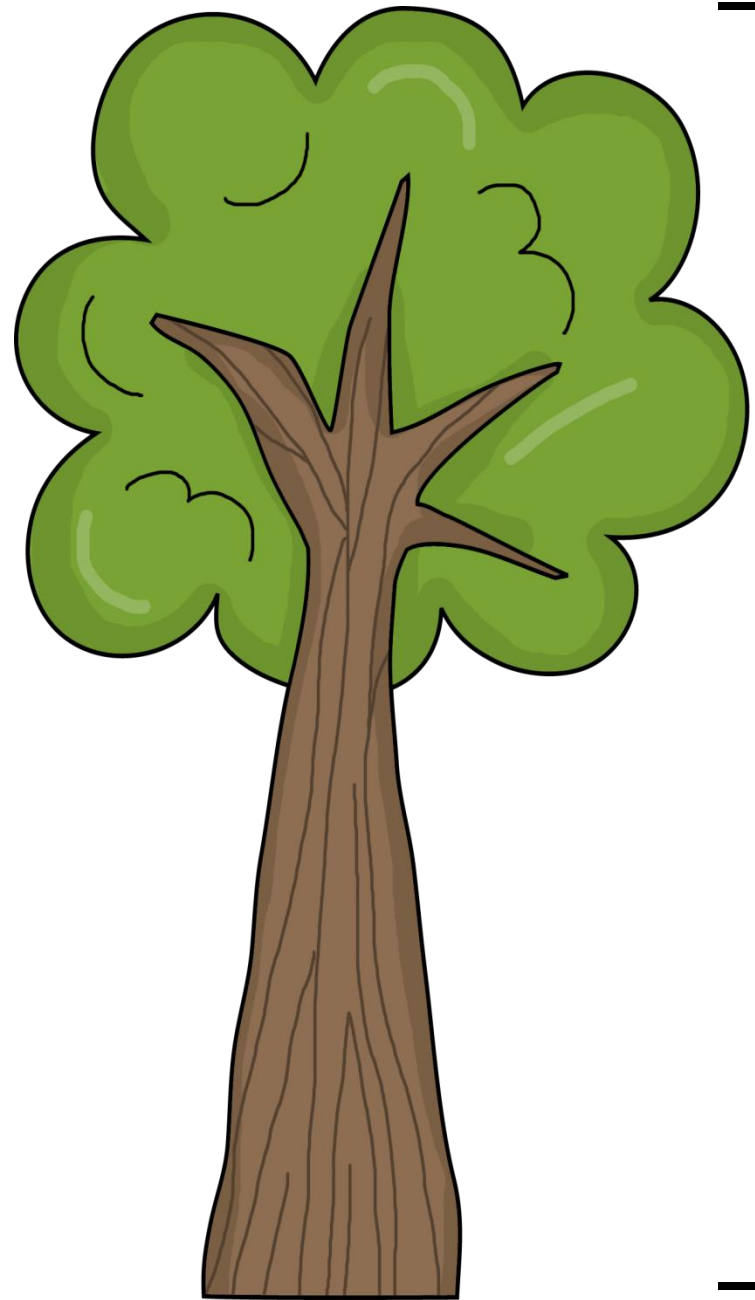
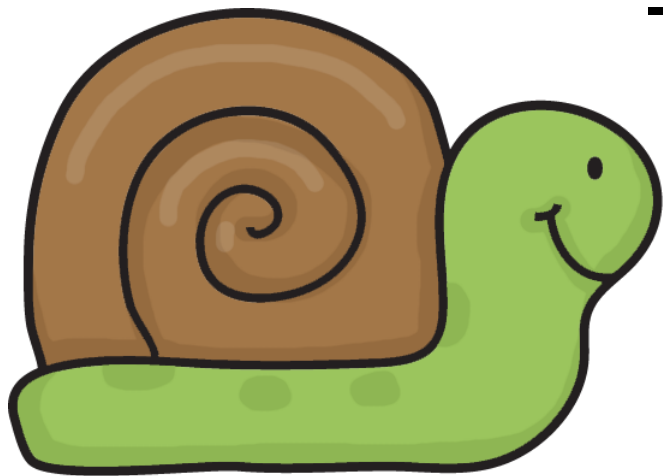
Measuring tools: BEES



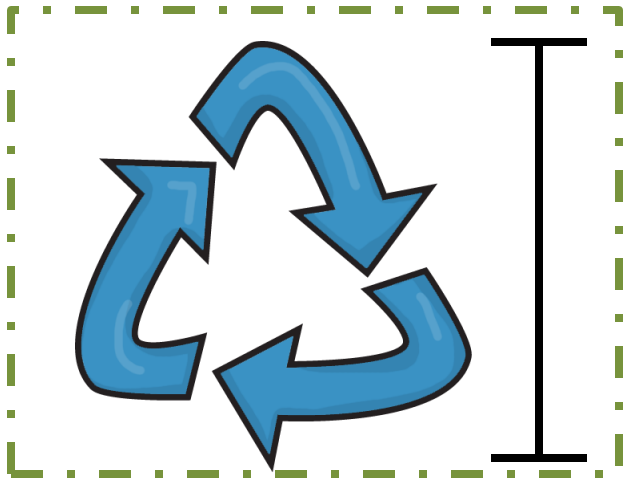
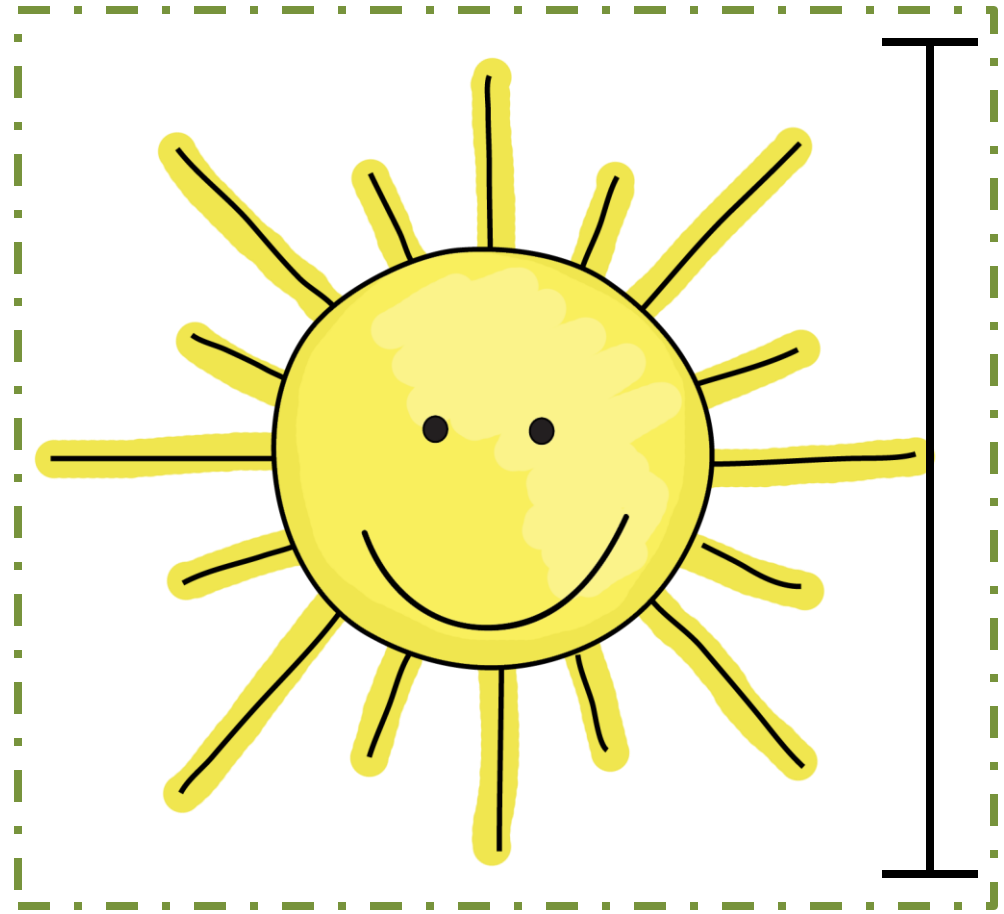
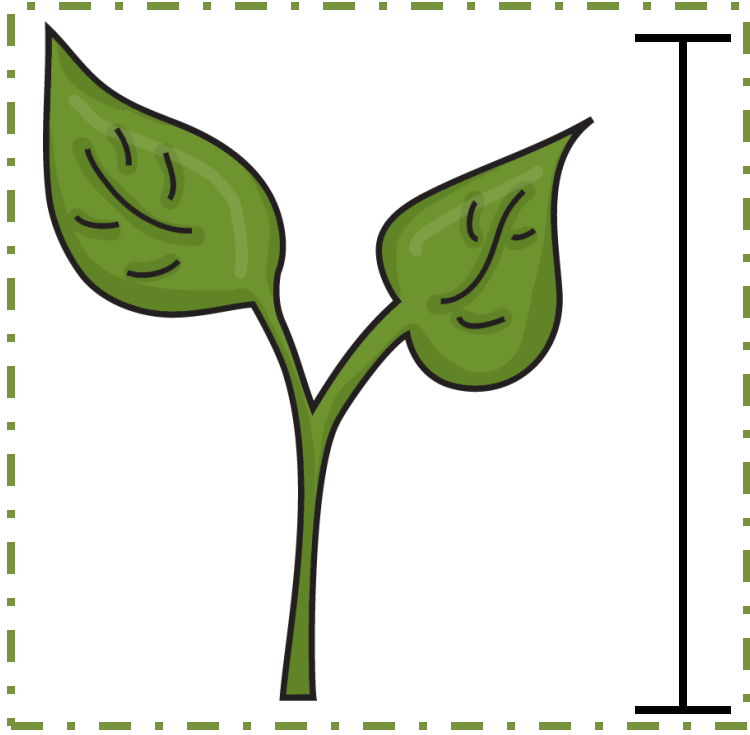
Objects to measure



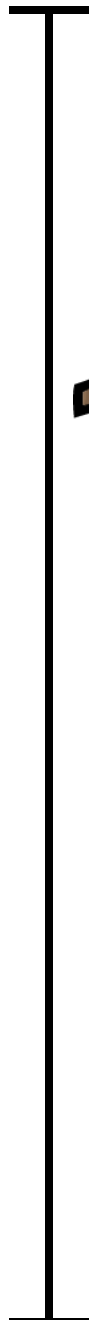
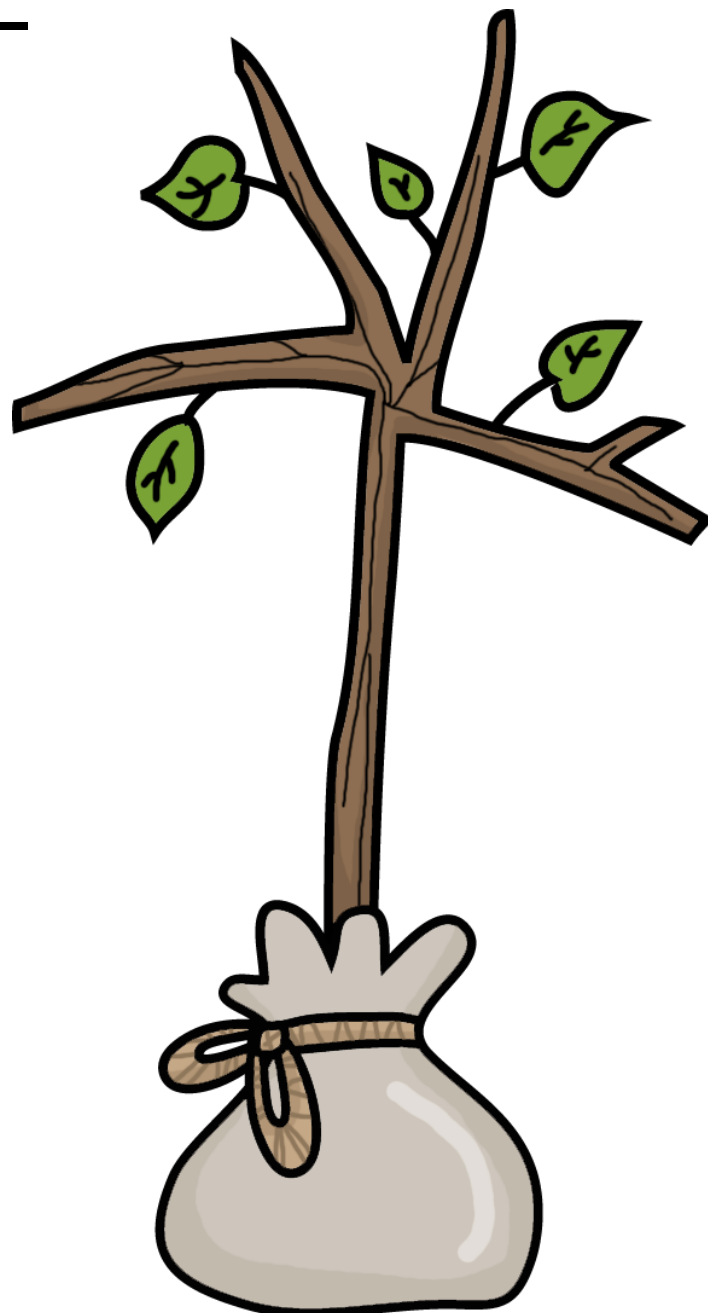
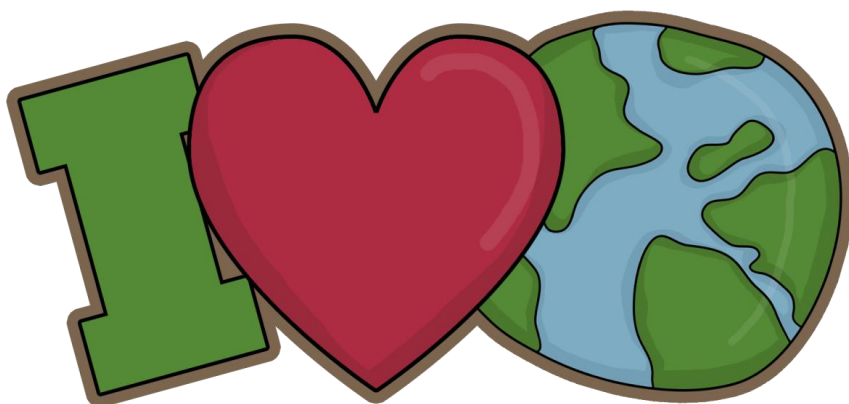
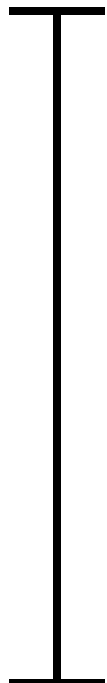
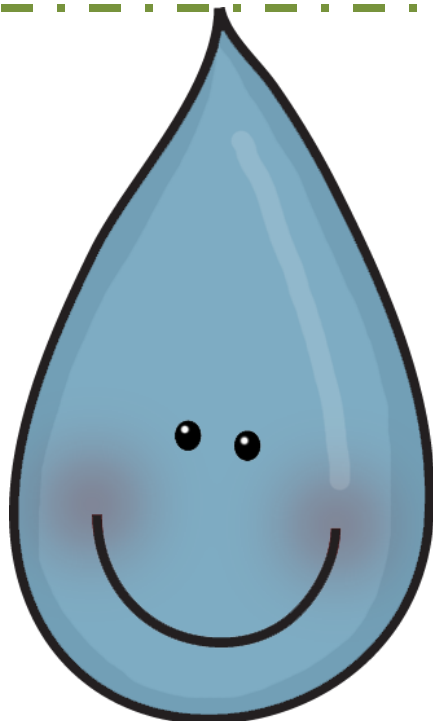
Objects to measure



Objects to Measure



Objects to measure

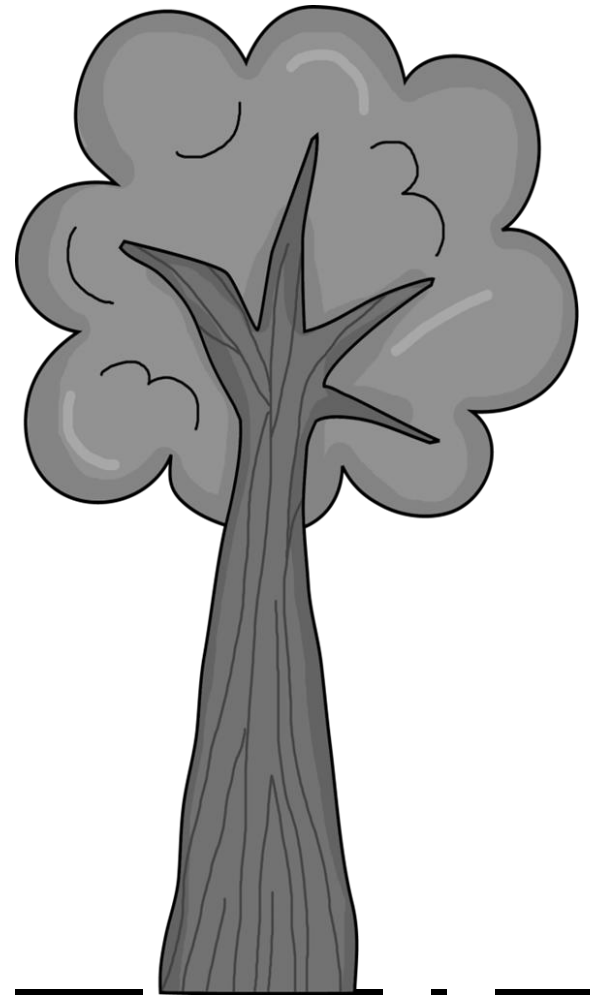


NAME: _____

DIRECTIONS— Fill out the PROBLEMS with what YOU measured with and how many it took.

How Long Will
It Grow?

1. Earth
What I measured with: _____
HOW MANY it took: _____
2. FLOWER
What I measured with: _____
HOW MANY it took: _____
3. Leaf
What I measured with: _____
HOW MANY it took: _____
4. Snail
What I measured with: _____
HOW MANY it took: _____
5. RECYCLE BIN
What I measured with: _____
HOW MANY it took: _____
6. Tree
What I measured with: _____
HOW MANY it took: _____

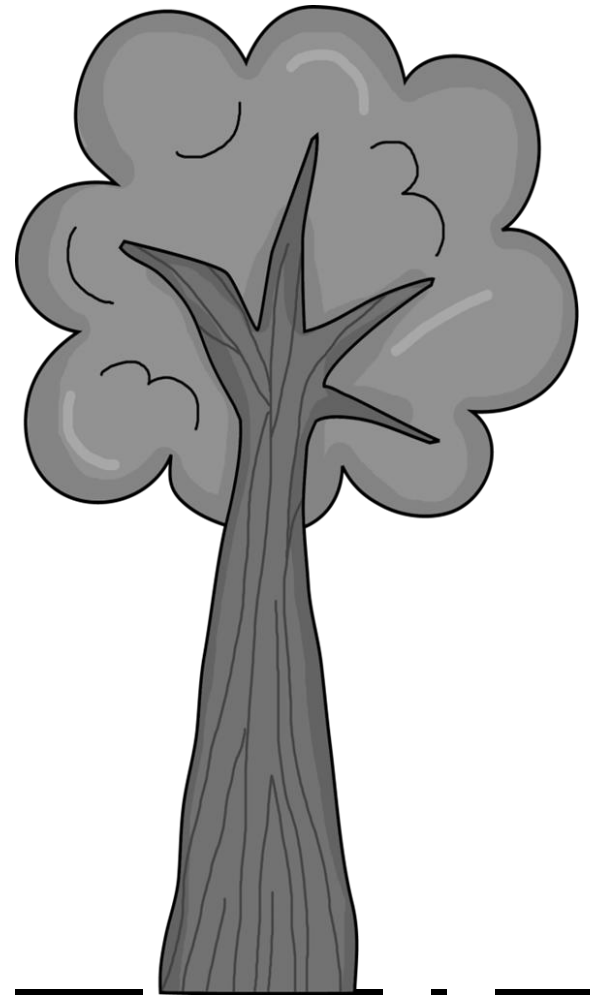


NAME: _____

DIRECTIONS— Fill out the PROBLEMS with what YOU measured with and how many it took.

How Long Will
It Grow?

1. SPROUT
What I measured with: _____
HOW MANY it took: _____
2. RECYCLE SIGN
What I measured with: _____
HOW MANY it took: _____
3. SUN
What I measured with: _____
HOW MANY it took: _____
4. RAINDROP
What I measured with: _____
HOW MANY it took: _____
5. NEW TREE
What I measured with: _____
HOW MANY it took: _____
6. I LOVE EARTH
What I measured with: _____
HOW MANY it took: _____

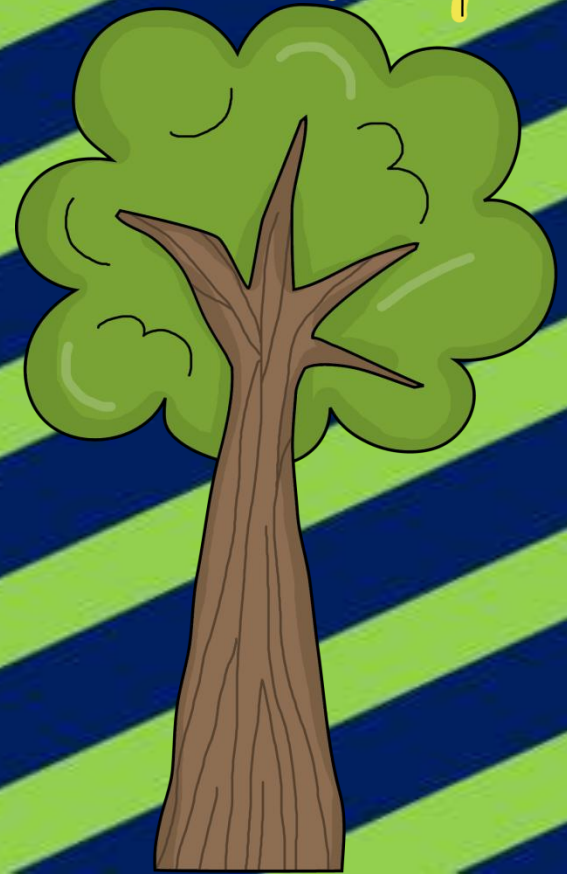


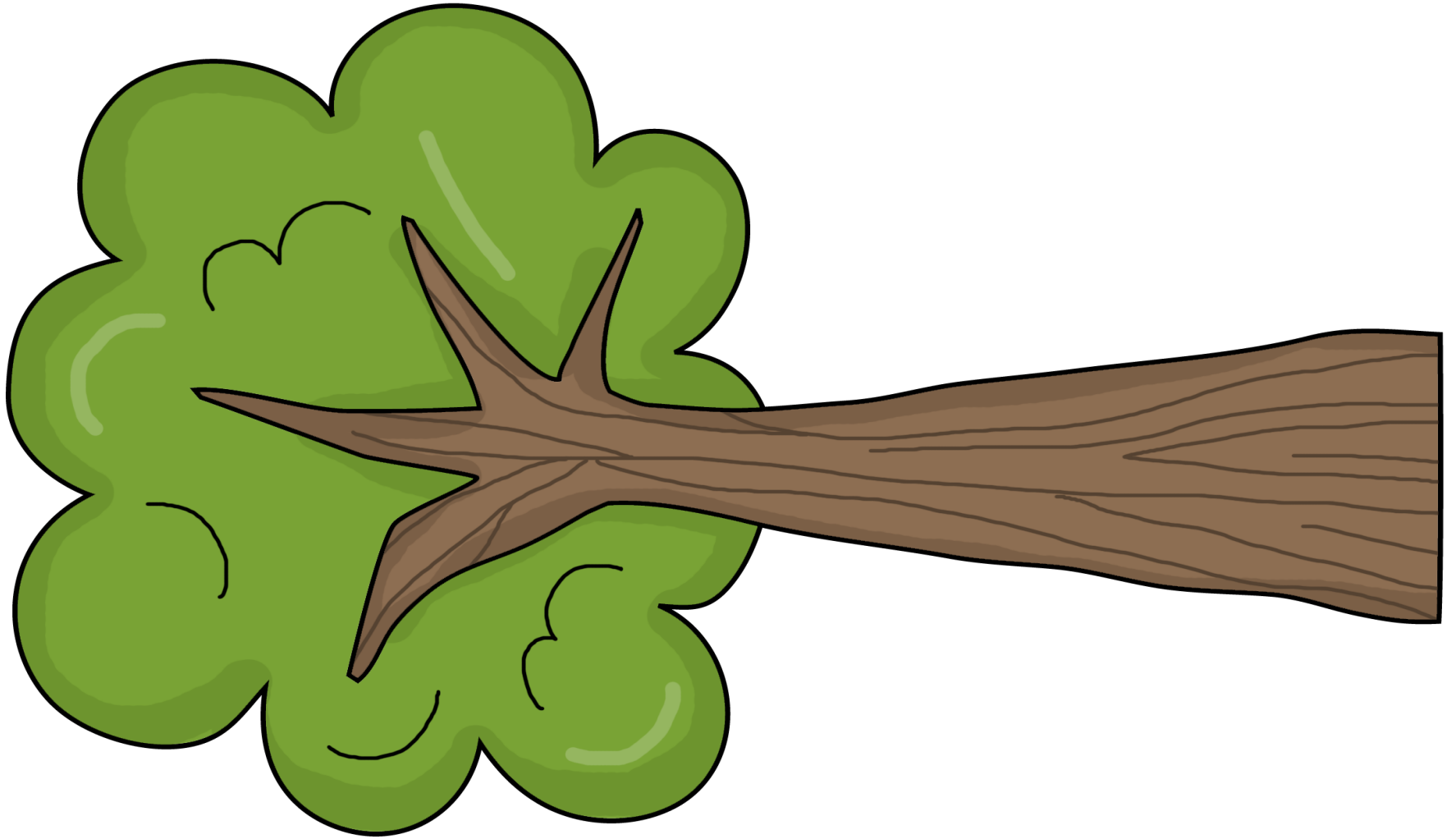
HOW LONG Will It GROW? (ORDER BY LENGTH)

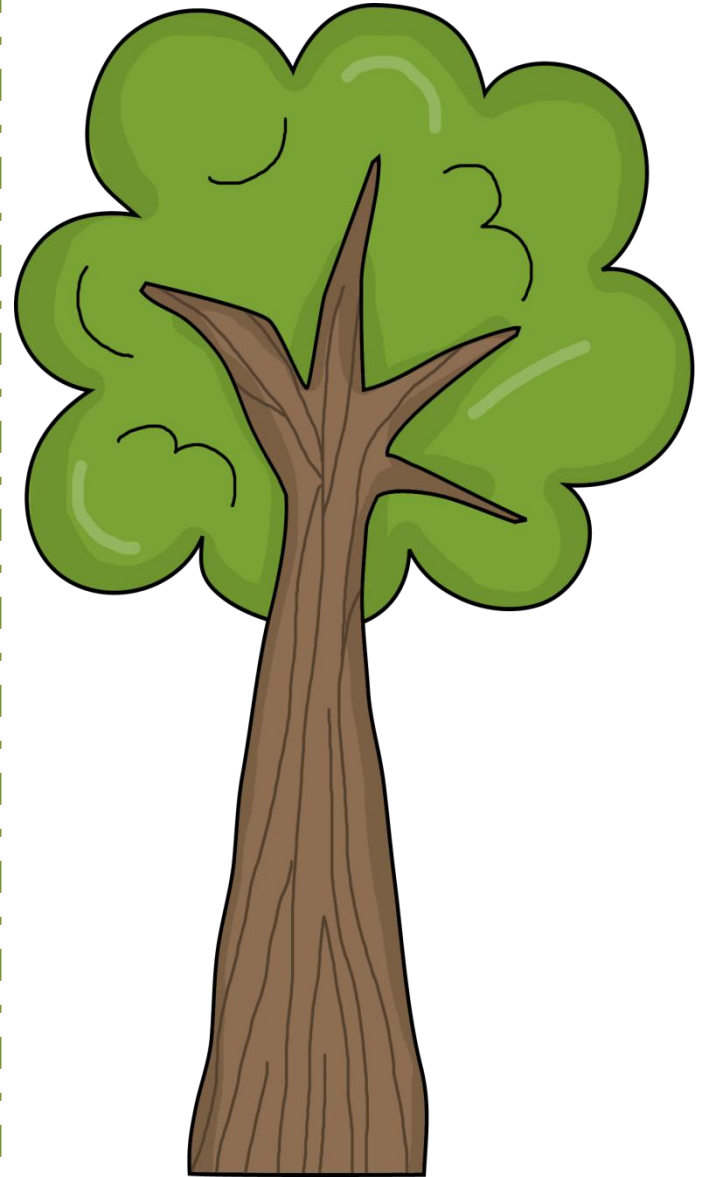
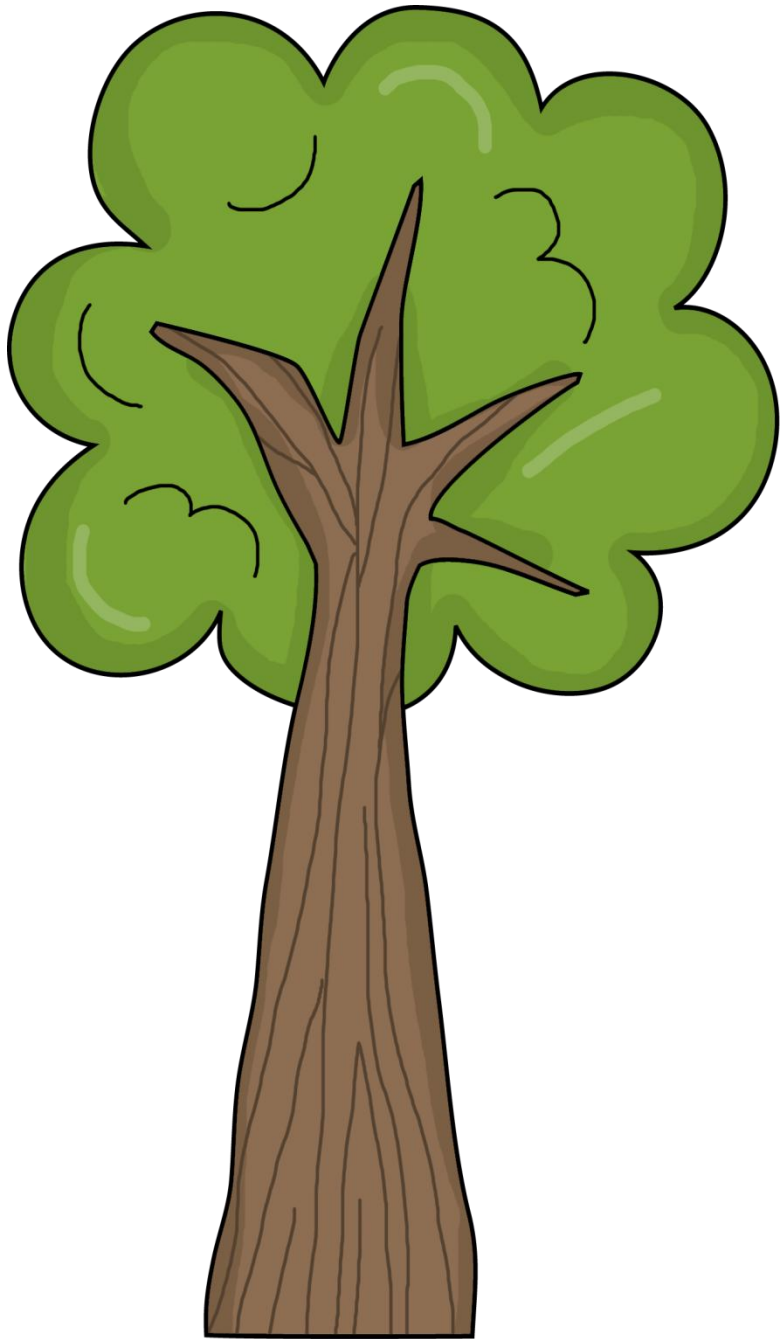


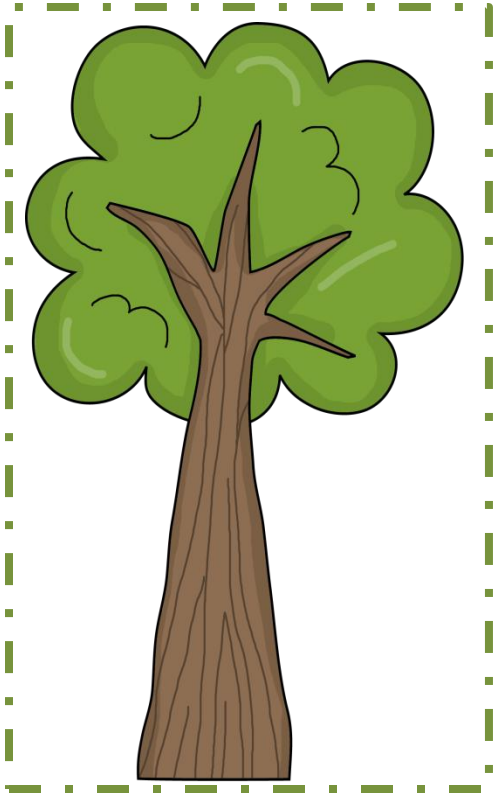
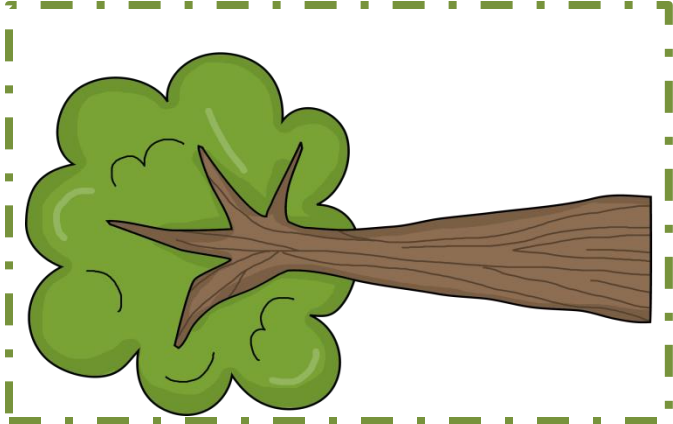
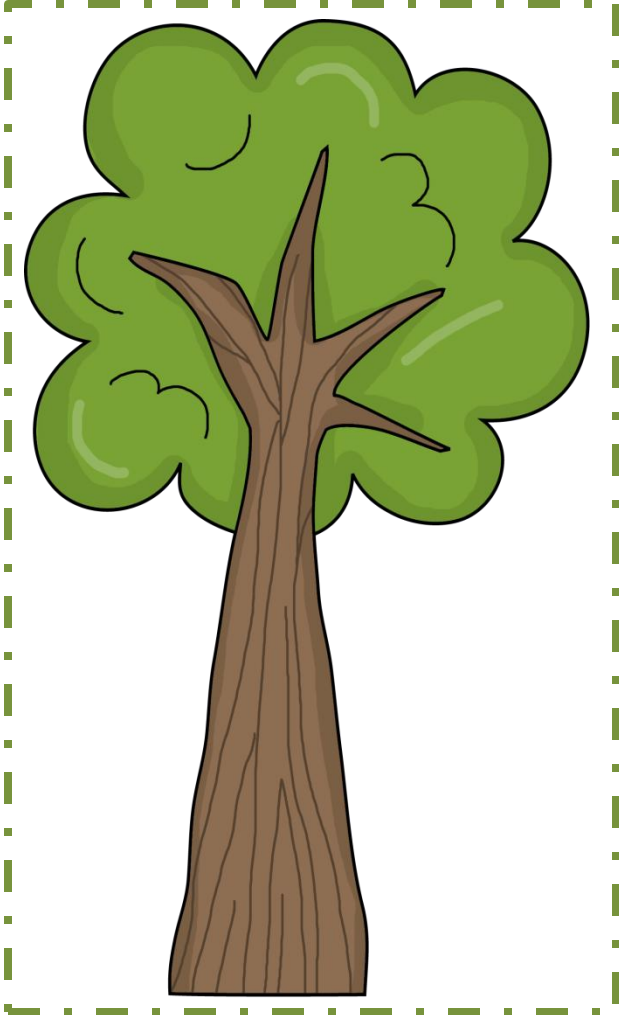
COMPARE AND ORDER TREES
FROM SHORTEST TO LONGEST.

FILL OUT WORKSHEET









NAME: _____

DIRECTIONS- ANSWER QUESTIONS 1-3.

How Long Will
It Grow?

1. Which is the longest?



2. Which is the shortest?



3. Draw a picture that shows shortest to longest:

